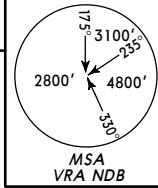


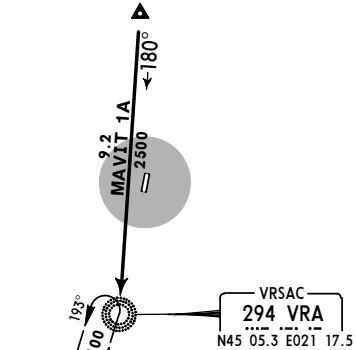
Apt Elev 276' Alt Set: hPa Trans level: By ATC Trans alt: 10000'



MAVIT 1A [MAVI1A]
TESLU 2A [TESL2A]
RWYS 01R, 19L ARRIVALS



MAVIT
N45 14.4 E021 18.5



VRSAC
294 VRA
N45 05.3 E021 17.5

BELGRADE
112.3 BEO
N44 48.4 E020 20.1

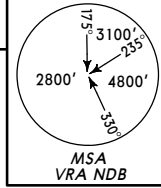


TESLU
D44 TPL
N44 47.1 E021 13.8

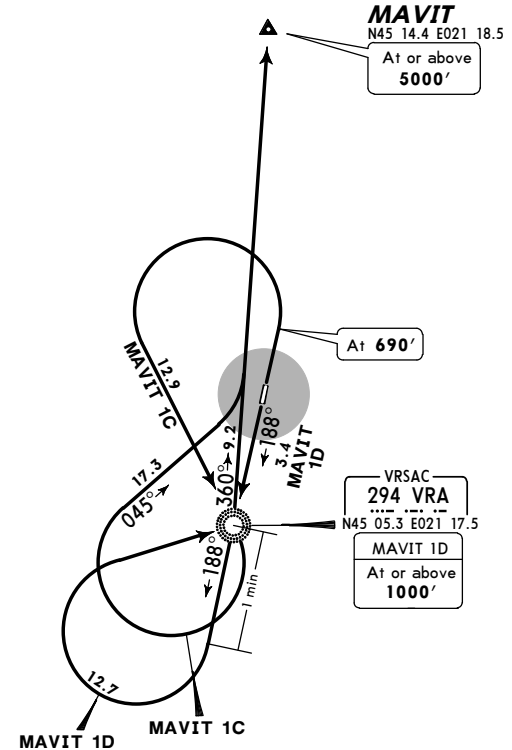
TOPOLA
116.8 TPL
N44 08.6 E020 44.7



Apt Elev 276' Trans level: By ATC Trans alt: 10000'



MAVIT ONE CHARLIE (MAVIT 1C) [MAVI1C]
MAVIT ONE DELTA (MAVIT 1D) [MAVI1D]
RWYS 01R, 19L DEPARTURES



MAVIT
N45 14.4 E021 18.5
At or above
5000'

At 690'

VRSAC
294 VRA
N45 05.3 E021 17.5
MAVIT 1D
At or above
1000'



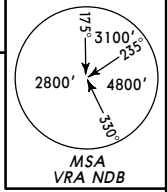
MAVIT 1C

This SID requires a minimum climb gradient of 273' per NM (4.5%) up to 690'.

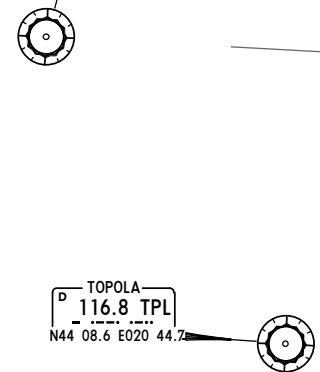
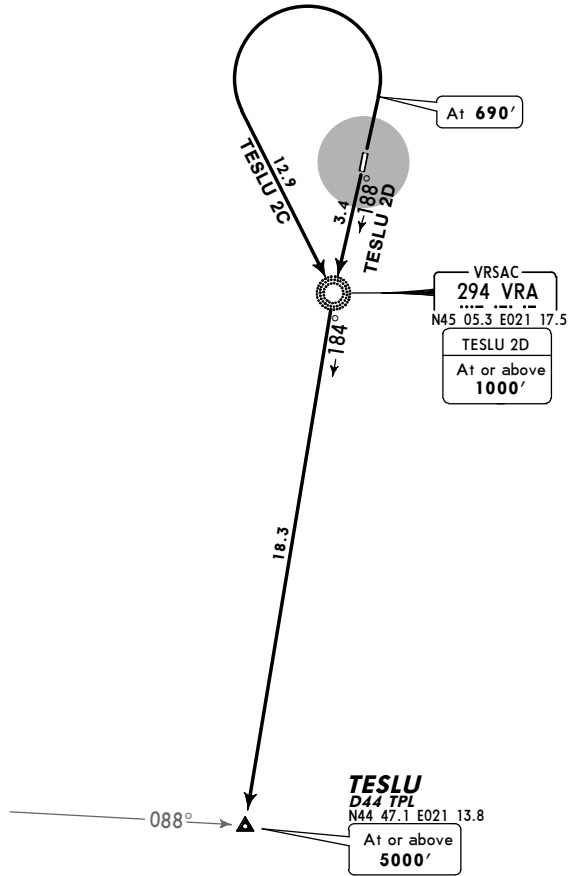
Gnd speed-KT	75	100	150	200	250	300
273' per NM	342	456	684	911	1139	1367

SID	RWY	ROUTING
MAVIT 1C	01R	Climb to 690', turn LEFT to VRA, turn RIGHT, 045° track, intercept 360° bearing from VRA to MAVIT.
MAVIT 1D	19L	Climb to VRA, 188° bearing for 1 minute, turn RIGHT to VRA, turn LEFT, 360° bearing to MAVIT.

Apt Elev 276' Trans level: By ATC Trans alt: 10000'



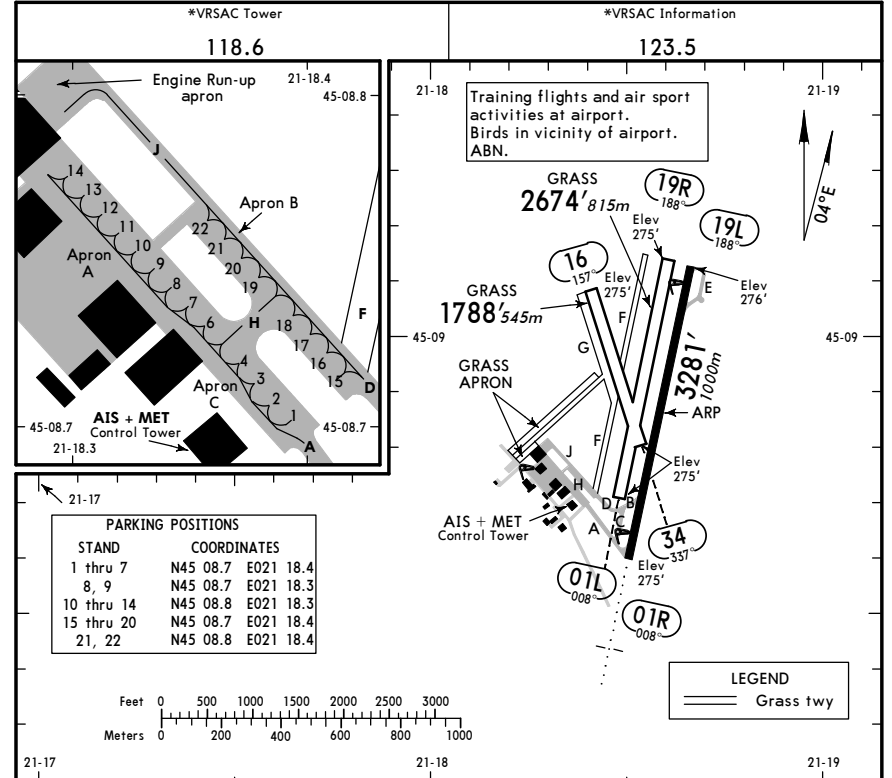
TESLU TWO CHARLIE (TESLU 2C) [TESL2C]
TESLU TWO DELTA (TESLU 2D) [TESL2D]
RWYS 01R, 19L DEPARTURES



TESLU 2C
This SID requires a minimum climb gradient of 273' per NM (4.5%) up to 690'.

Gnd speed-KT	75	100	150	200	250	300
273' per NM	342	456	684	911	1139	1367

SID	RWY	ROUTING
TESLU 2C	01R	Climb to 690', turn LEFT to VRA, 184° bearing to TESLU.
TESLU 2D	19L	Climb to VRA, 184° bearing to TESLU.



PARKING POSITIONS

STAND	COORDINATES
1 thru 7	N45 08.7 E021 18.4
8, 9	N45 08.7 E021 18.3
10 thru 14	N45 08.8 E021 18.3
15 thru 20	N45 08.7 E021 18.4
21, 22	N45 08.8 E021 18.4

ADDITIONAL RUNWAY INFORMATION

RWY	USABLE LENGTHS LANDING BEYOND	TAKE-OFF	WIDTH
01R	RL (50m) ALS		82' 25m
19L	RL (50m)		
01L			135' 41m
19R			
16			98' 30m
34			

JAR-OPS TAKE-OFF I

	All Rwys		
	RCLM (DAY only) or RL	RCLM (DAY only) or RL	NIL (DAY only)
A	250m	400m	500m
B			
C			
D	NOT AUTHORIZED		

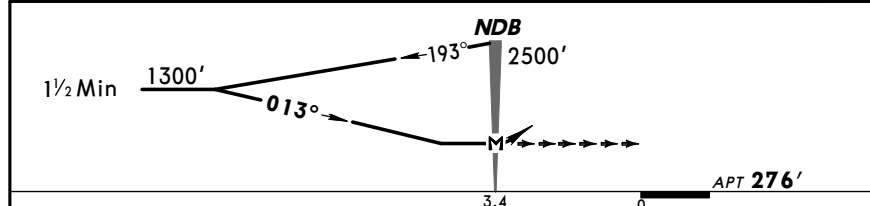
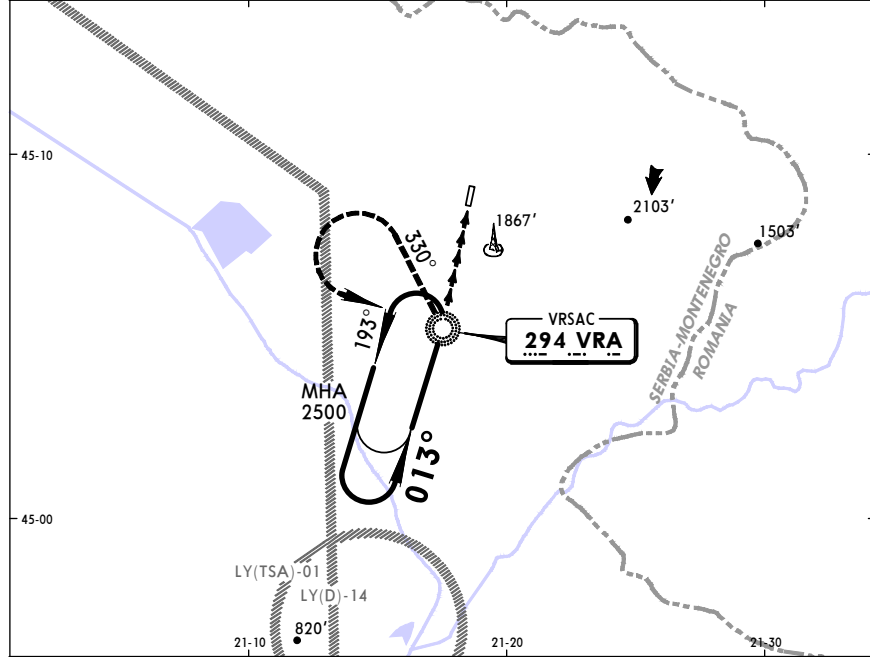
Operators applying U.S. Ops Specs: CL required below 300m.

LYVR
VRSAC

JEPPESSEN
4 FEB 11
Eff 10 Feb **(16-1)** CAT A & B

VRSAC, SERBIA
NDB Rwy 01R

*VRSAC Approach 125.05		*VRSAC Tower 118.6		*VRSAC Information 123.5	
NDB VRA 294	Final Apc Crs 013°	Minimum Alt No FAF	MDA(H) 840' (564')	Apt Elev 276'	
MISSED APCH: Turn LEFT (MAX 130 KT) onto 330° from NDB. At 1300' climbing turn LEFT to NDB to 2500' and hold.					
Alt Set: hPa		Apt Elev: 10 hPa		Trans level: By ATC	
		Trans alt: 10000'		MSA VRA NDB	



ALS	130 KT	330°	VRA
	MAX	LT	from 294

JAR-OPS STRAIGHT-IN LANDING RWY 01R		CIRCLE-TO-LAND	
MDA(H) 840' (564')		ALS out	
A	2400m	A	For Circle-to-land procedure with prescribed flight tracks see 19-10.
B		B	
C	NOT AUTHORIZED	C	NOT AUTHORIZED
D		D	

CHANGES: MSA.

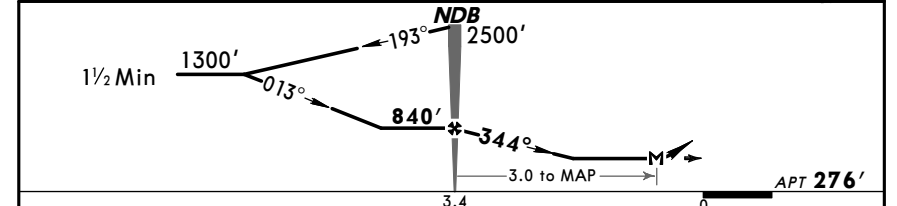
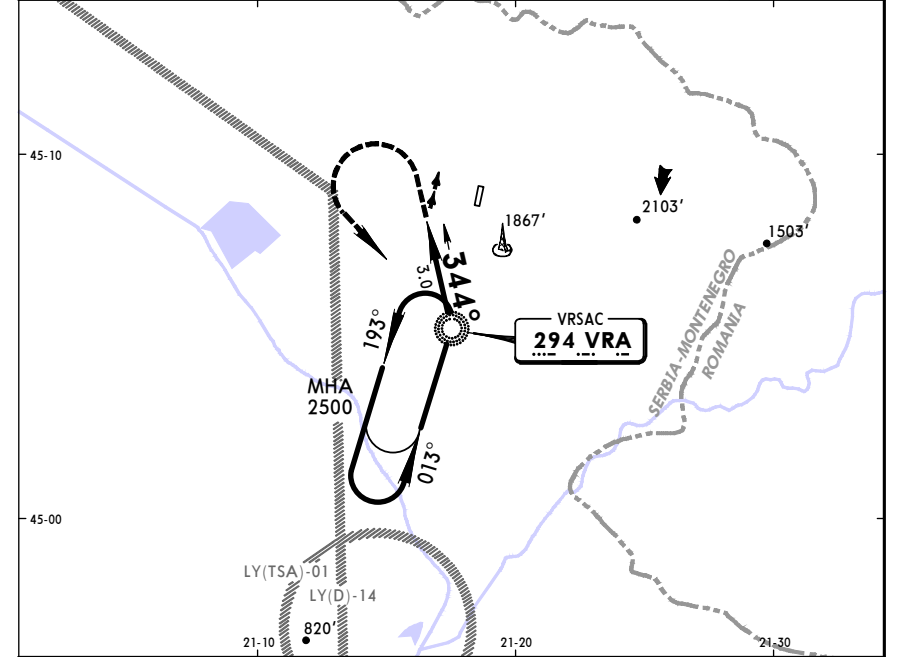
© JEPPESSEN, 1999, 2011. ALL RIGHTS RESERVED.

LYVR
VRSAC

JEPPESSEN
4 FEB 11
Eff 10 Feb **(16-2)** CAT A & B

VRSAC, SERBIA
NDB Rwy 19L

*VRSAC Approach 125.05		*VRSAC Tower 118.6		*VRSAC Information 123.5	
NDB VRA 294	Final Apc Crs 344°	Minimum Alt NDB 840' (564')	MDA(H) Refer to Minimums	Apt Elev 276'	
MISSED APCH: Climb STRAIGHT AHEAD to 890', then climbing turn LEFT to NDB to 2500' and hold.					
Alt Set: hPa		Apt Elev: 10 hPa		Trans level: By ATC	
		Trans alt: 10000'		MSA VRA NDB	



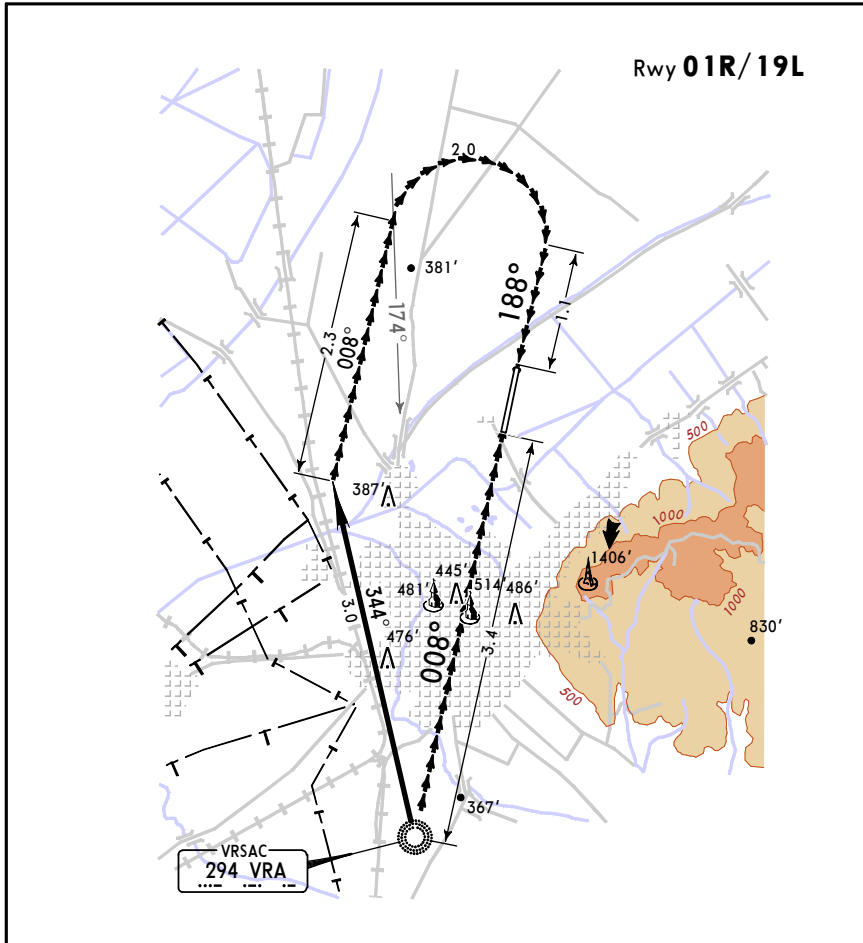
Gnd speed-Kts	70	90	100	120	140	160	890'	
Descent angle	3.21°	3.98	5.11	5.68	6.82	7.95		9.09
NDB to MAP	3.0	2:34	2:00	1:48	1:30	1:17		1:08

JAR-OPS STRAIGHT-IN LANDING		CIRCLE-TO-LAND	
		Missed apch climb gradient mim 3.1%	
A	NOT AUTHORIZED	A	For Circle-to-land procedure with prescribed flight tracks see 19-10.
B		B	
C		C	NOT AUTHORIZED
D		D	

CHANGES: MSA.

© JEPPESSEN, 1999, 2011. ALL RIGHTS RESERVED.

CIRCLE-TO-LAND
WITH PRESCRIBED FLIGHT TRACKS



MISSED APPROACH:

If visual reference is lost, initial climbing turn toward the landing rwy should be made. Overhead airport proceed climbing to NDB and as directed.

JAR-OPS

	Max Kts.	MDA(H)	VIS
A	100	790' (514') \square	2400m
B	135		
C		NOT AUTHORIZED	
D			

\square After NDB apch rwy 01R: MDA(H) 840' (564').

PANS OPS 3