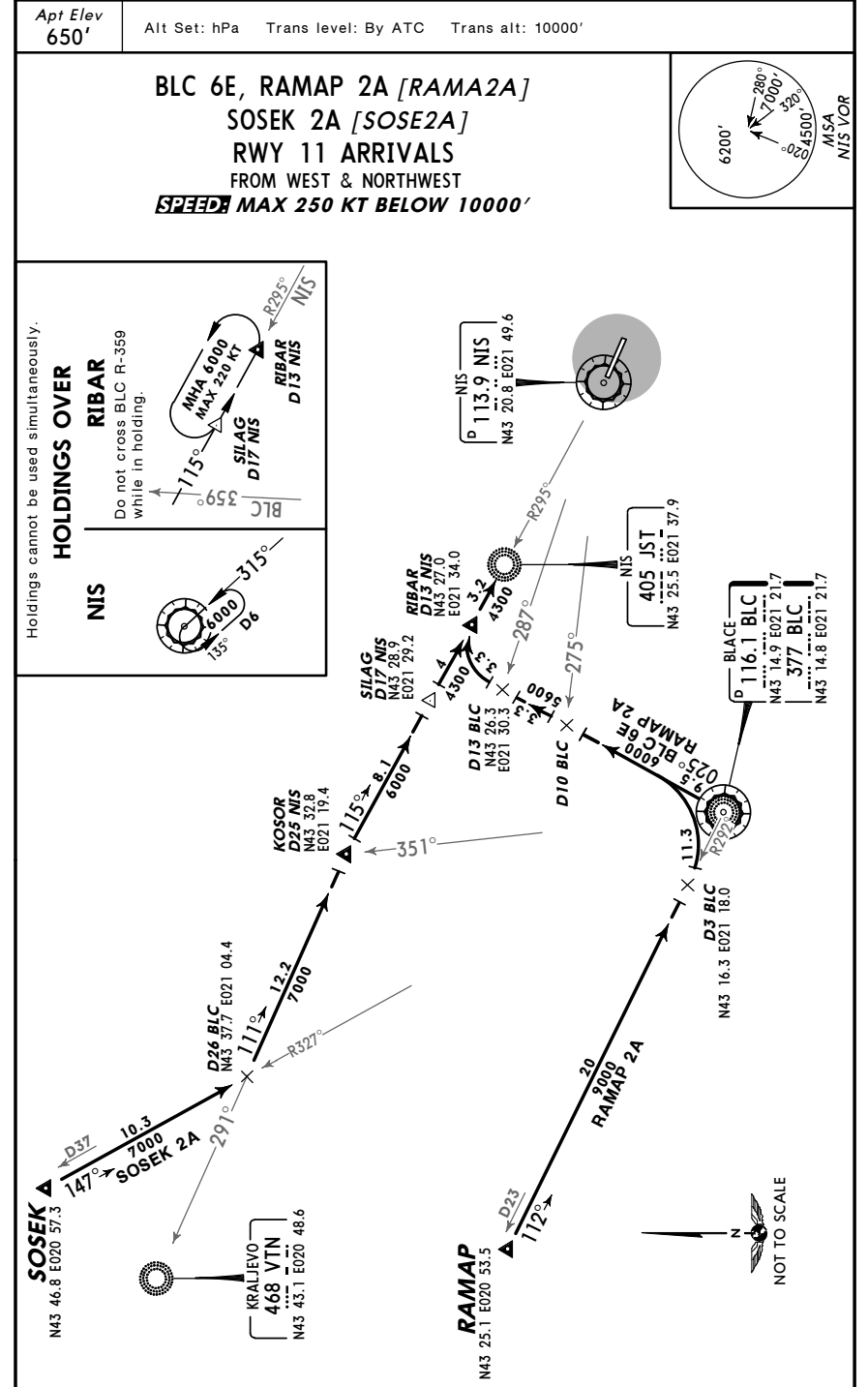


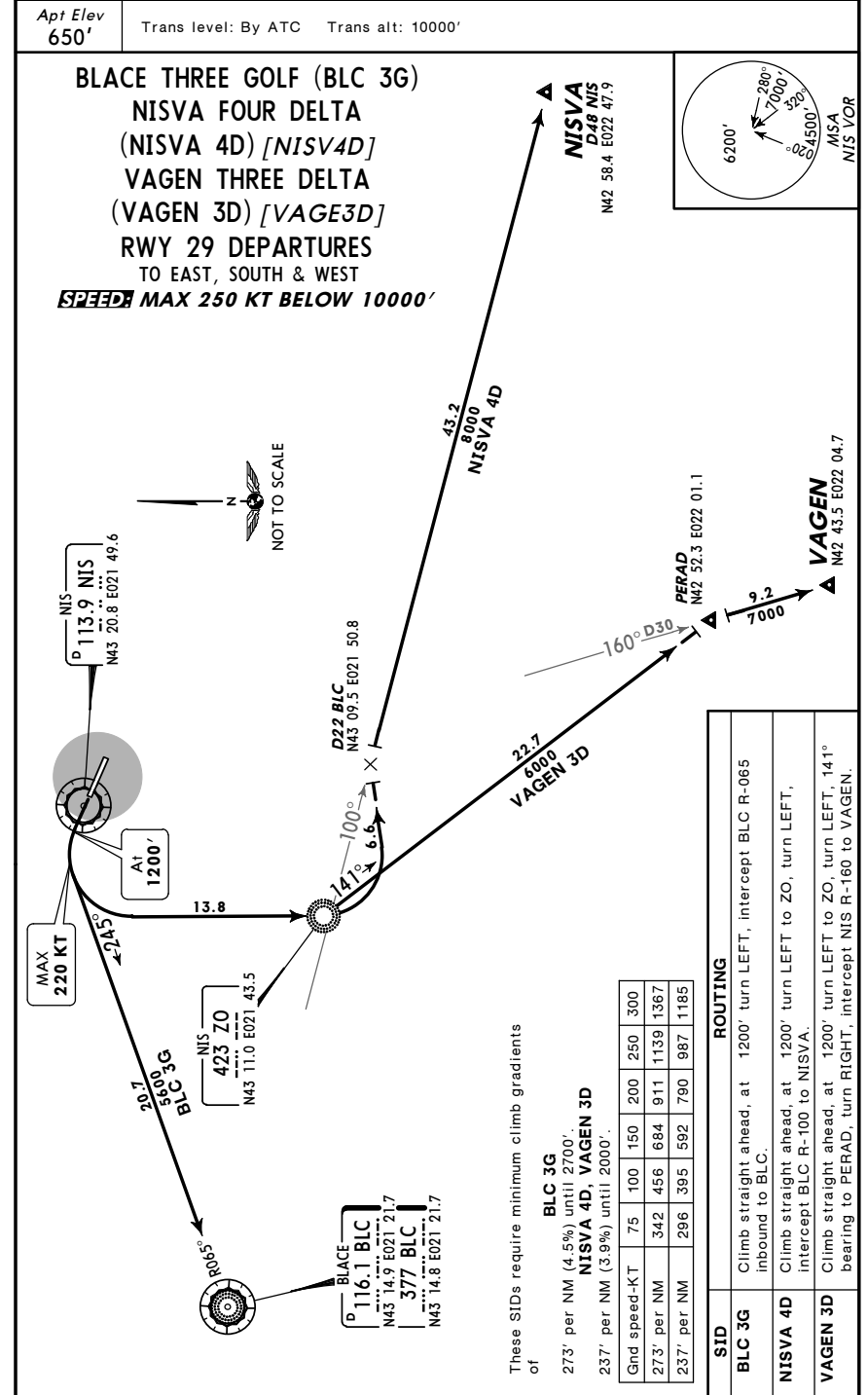
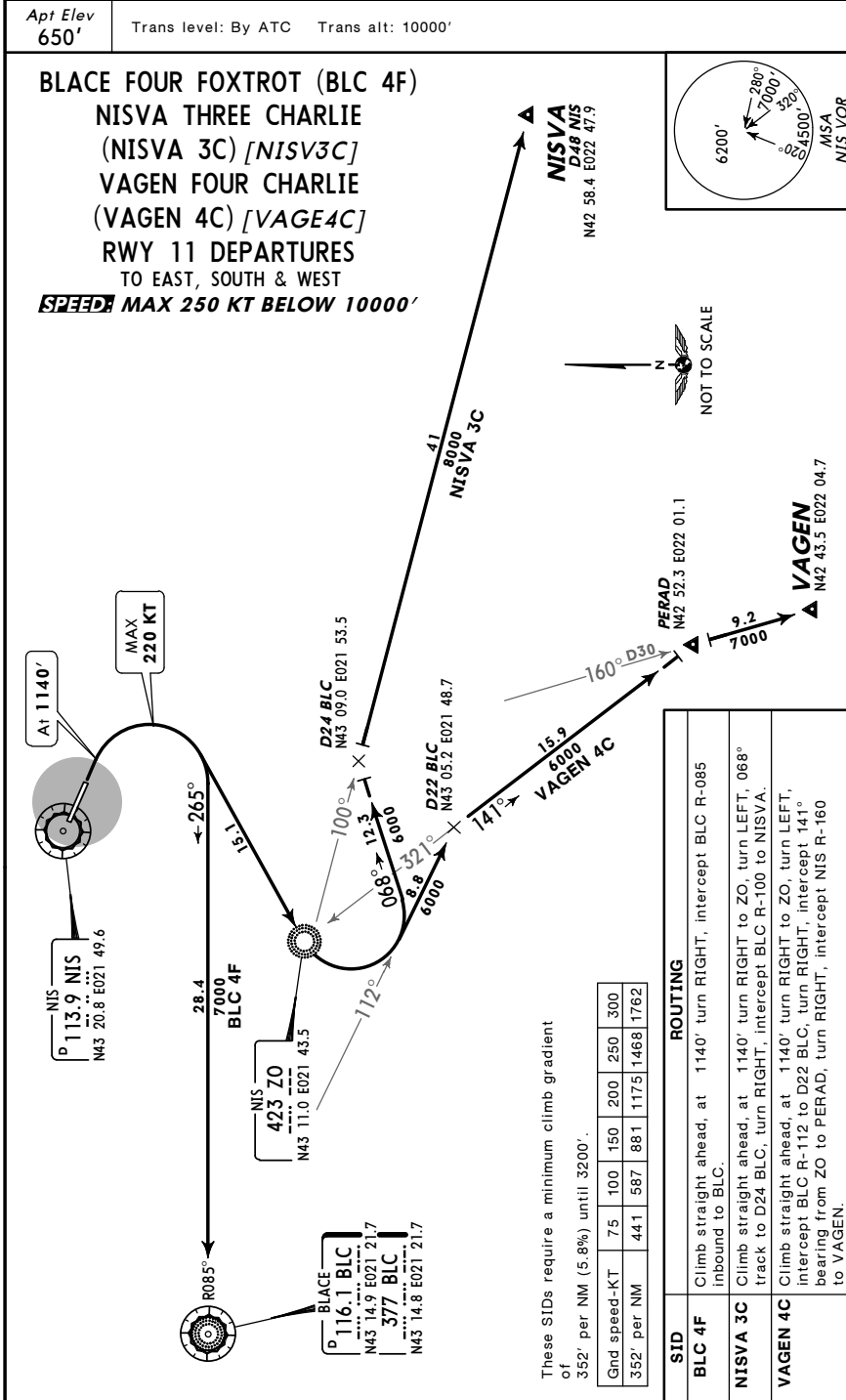
CHANGES: STAR OBLAK 1A renumbered 2A.

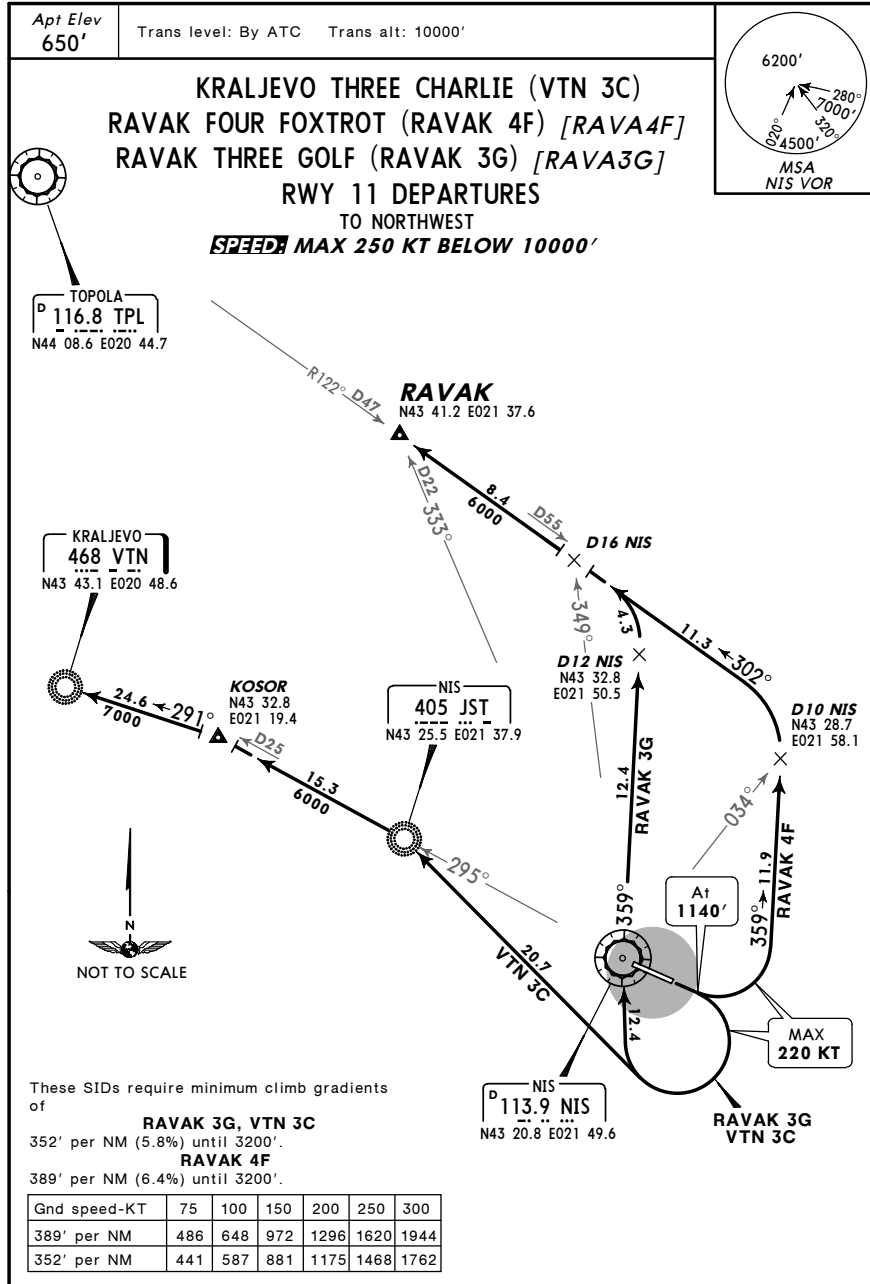
© JEPPESEN, 2003, 2011. ALL RIGHTS RESERVED.



CHANGES: STARS renumbered.

© JEPPESEN, 2003, 2011. ALL RIGHTS RESERVED.

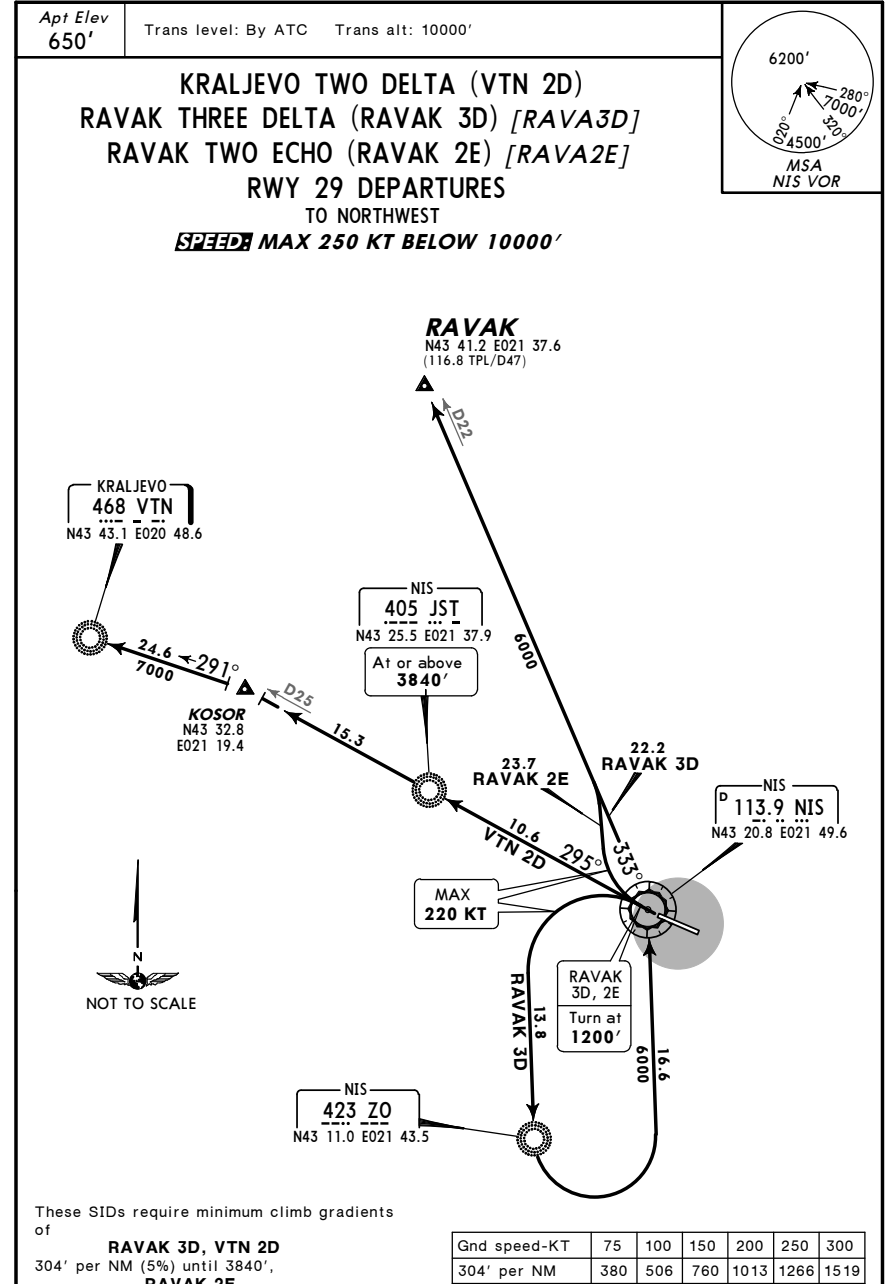




SID	ROUTING
RAVAK 4F	Climb straight ahead, at 1140' turn LEFT, 359° track, at D10 NIS turn LEFT, intercept TPL R-122 inbound to RAVAK.
RAVAK 3G	Climb straight ahead, at 1140' turn RIGHT to NIS, NIS R-359 to D12 NIS, turn LEFT, intercept TPL R-122 inbound to RAVAK.
VTN 3C	Climb straight ahead, at 1140' turn RIGHT to JST, turn LEFT, intercept NIS R-295 to KOSOR, intercept 291° bearing to VTN.

CHANGES: RAVAK SIDs renumbered.

© JEPPESEN, 2003, 2011. ALL RIGHTS RESERVED.



SID	ROUTING
RAVAK 3D	Climb straight ahead, at 1200' turn LEFT to ZO, turn LEFT to NIS, NIS R-333 to RAVAK.
RAVAK 2E	Climb straight ahead, at 1200' turn RIGHT, intercept NIS R-333 to RAVAK.
VTN 2D	Climb on NIS R-295 to KOSOR, intercept 291° bearing to VTN.

CHANGES: SID RAVAK 2D renumbered 3D.

© JEPPESEN, 2003, 2011. ALL RIGHTS RESERVED.

